

# ESLR | Effects of Sea Level Rise Program



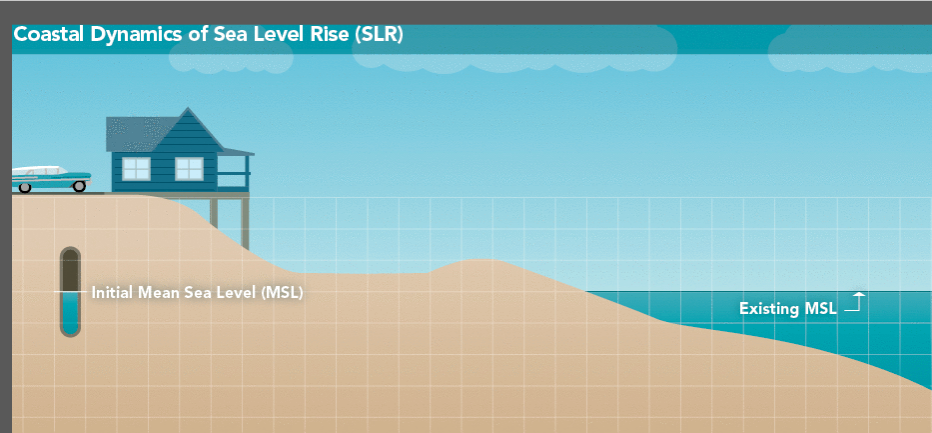
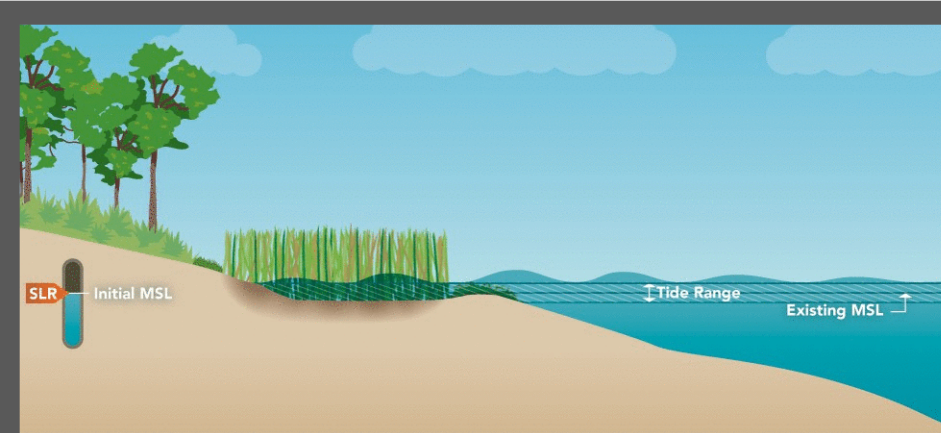
David Kidwell

Director, Competitive Research Program

[David.Kidwell@noaa.gov](mailto:David.Kidwell@noaa.gov)



## Improve models to capture coastal processes to predict coastal change... and subsequent impacts...

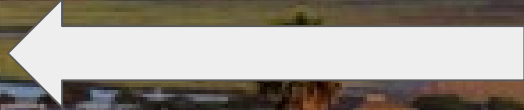


...to inform policy action and land management

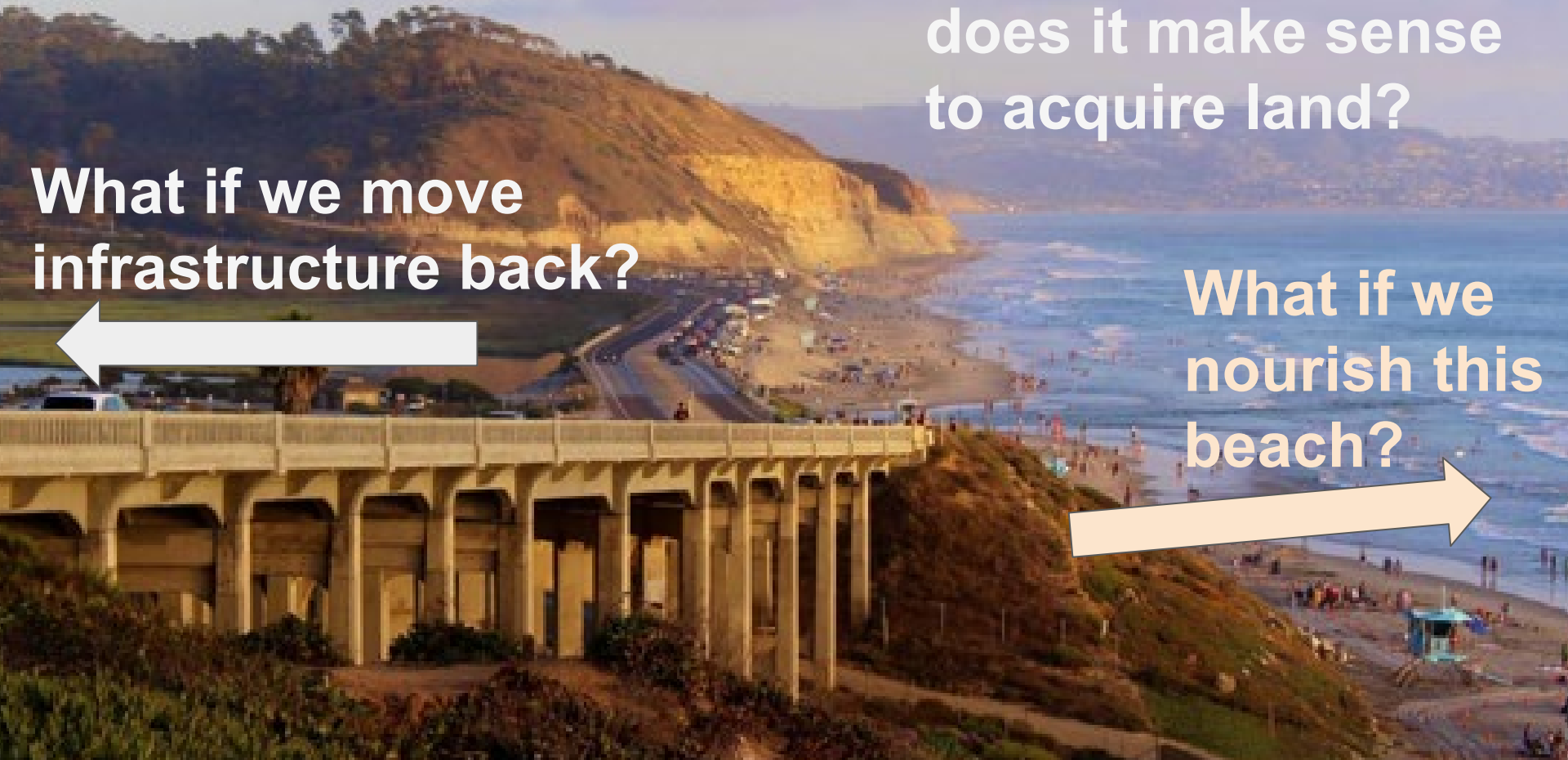


Where and when does it make sense to acquire land?

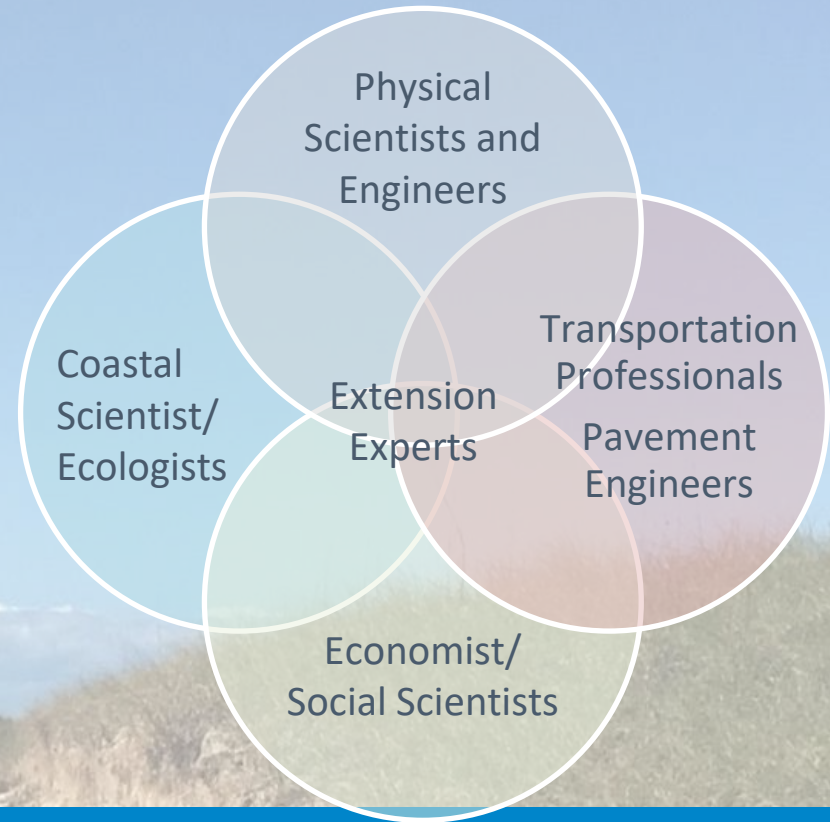
What if we move infrastructure back?



What if we nourish this beach?



**ESLR uses a co-production approach and transdisciplinary research teams.**

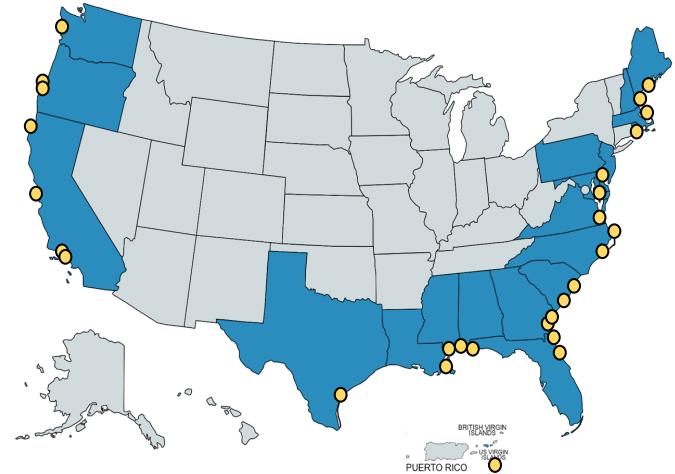






## There are 20 active projects from recent ESLR competitions

- 2023 competition focussed on technical assistance for adaptation planning.
- Resulted in 8 new awards
  - 3 with “base” funds
  - 5 with IRA funds
- Projects can be found on the [ESLR Program Page](#).



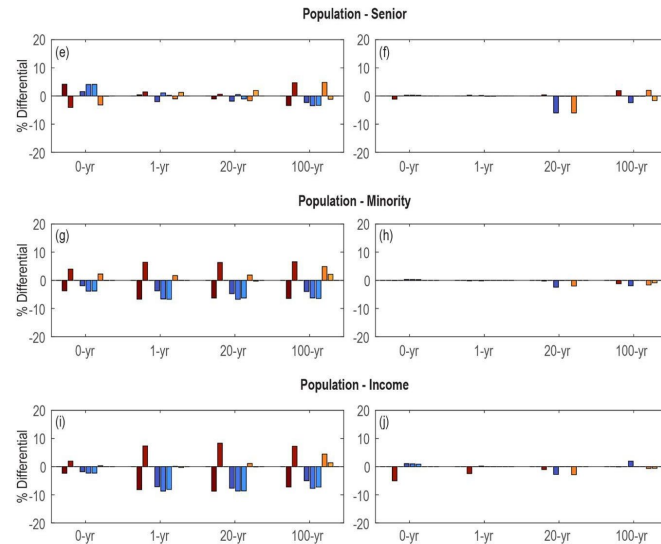
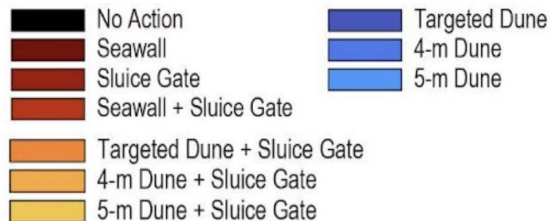
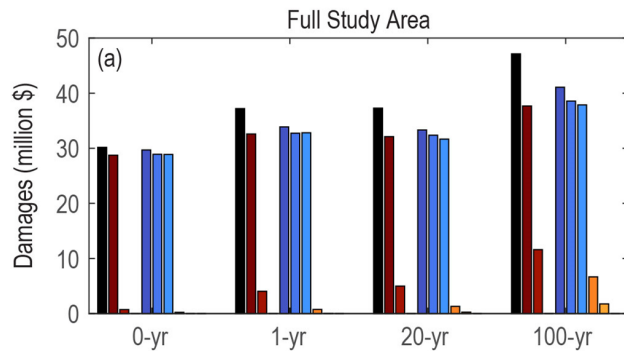
FEMA



NFWF

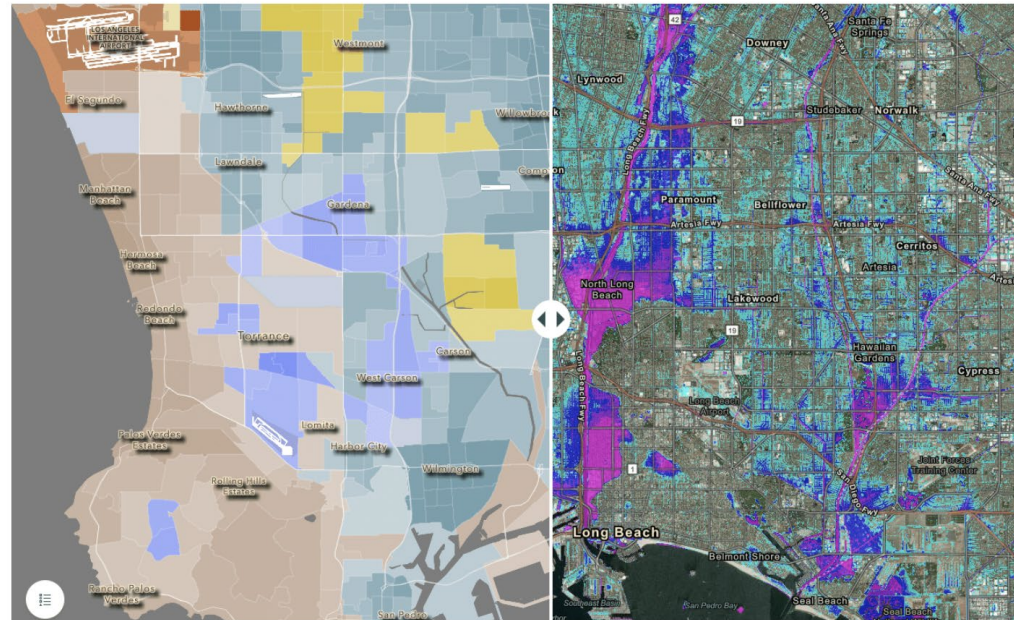
# ESLR TA projects will aim to inform effective NBS projects

Possible Actions: What approach saves \$ ? Who is Impacted?



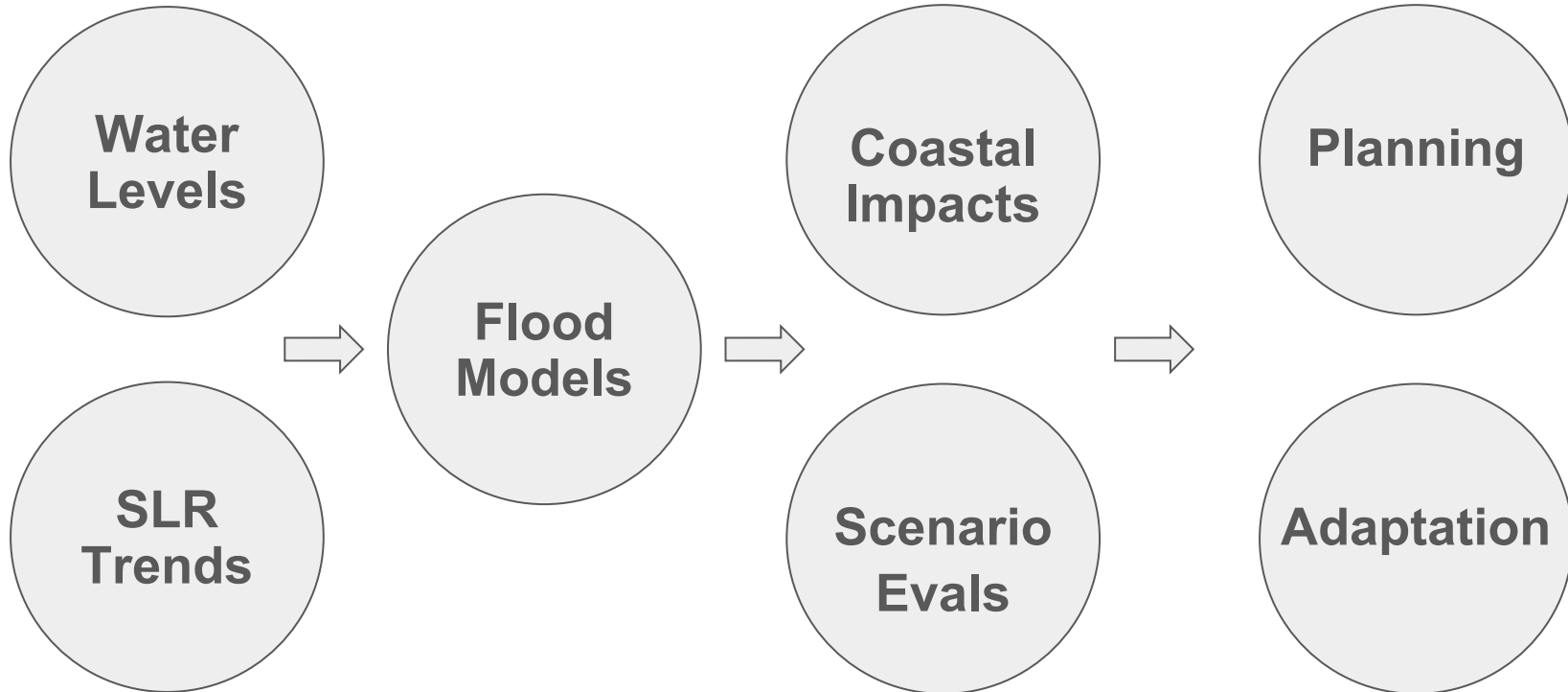
## Assessment of Flood Adaptation Options in Los Angeles County

- Local governance: This viewer provided proof by LA County Chair that stormwater infrastructure was inequitable.
- Co-create three county-wide flood risk adaptation strategies
- Characterize the benefits, costs, and tradeoffs with respect to social, economic, and ecological goals
- Facilitate results into municipal and county adaptation plans



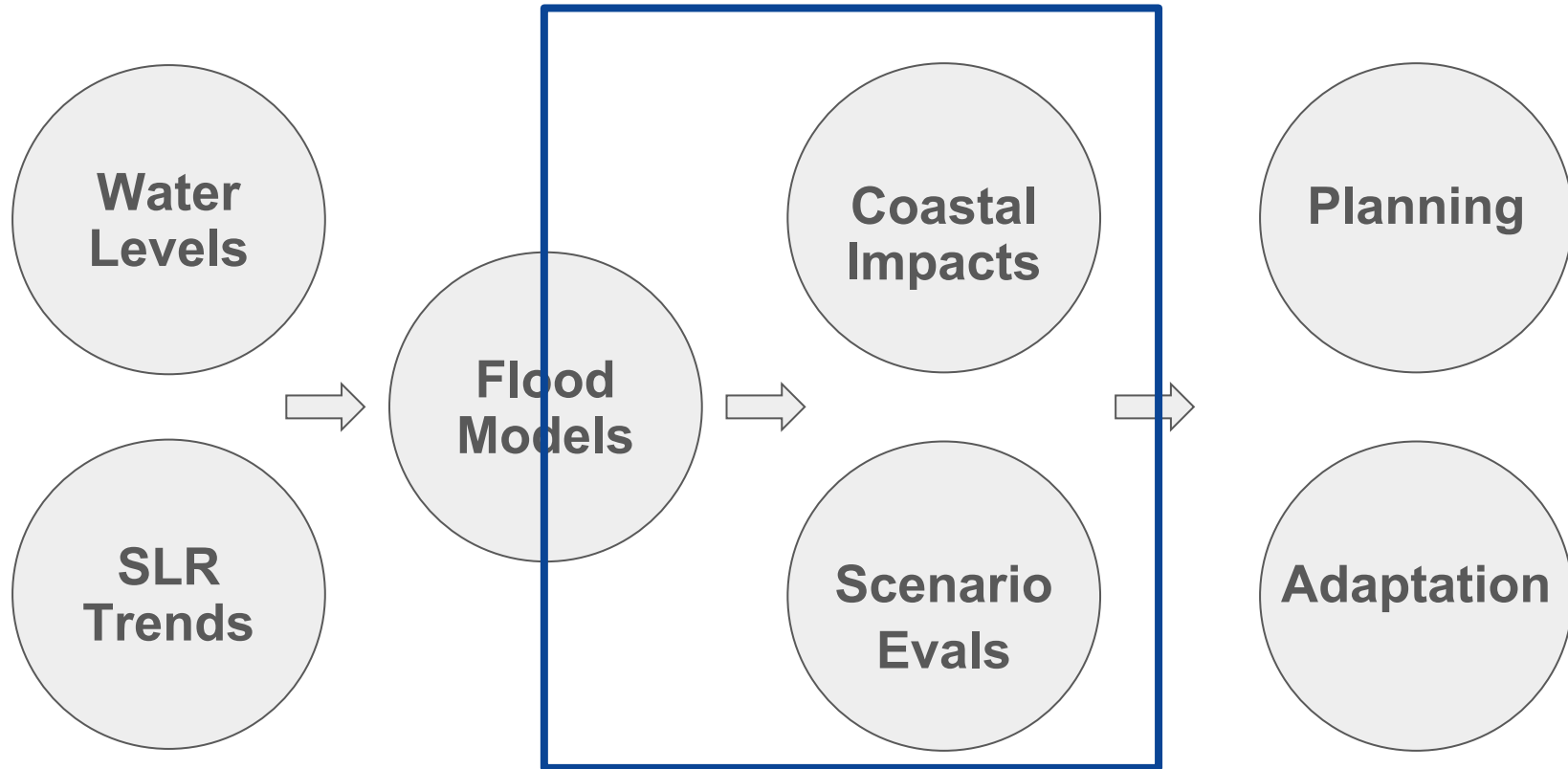
Los Angeles Flood Risk - distribution of predominant race/ethnicity (left) and flood depth (right).

## ESLR leverages many components of NOAA





## ESLR leverages many components of NOAA



# Questions

[David.Kidwell@noaa.gov](mailto:David.Kidwell@noaa.gov)

## *ESLR Program Managers*

Trevor Meckley

[Trevor.Meckley@noaa.gov](mailto:Trevor.Meckley@noaa.gov)

Rebecca Atkins

[Rebecca.Atkins@noaa.gov](mailto:Rebecca.Atkins@noaa.gov)

Sarah Pease

[Sarah.Pease@noaa.gov](mailto:Sarah.Pease@noaa.gov)



Dr. Trevor Meckley



Dr. Rebecca  
Atkins



Dr. Sarah  
Pease