



Sound

Essential Observations in and around Protected Areas

June 27, 2023

IOOS Advisory Committee meeting





Olympic Coast



Thunder Bay



Lake Ontario



Wisconsin
Shipwreck Coast



Lake Erie
Quadrangle



Stellwagen Bank

Hudson Canyon

Mallows Bay-Potomac River

Monitor

Gray's Reef

Florida Keys

Flower Garden Banks



Florida Keys

Greater Farallones

Cordell Bank

Monterey Bay

Chumash Heritage

Channel Islands



Papahānaumokuākea



Hawaiian Islands
Humpback Whale

Pacific Remote Islands

American Samoa (U.S.)



Rose Atoll



0 500 1000 2000 miles



National Marine Sanctuary



Marine National Monument



Proposed National Marine Sanctuary



Bathymetric Tints (Depths are in corrected meters below mean sea level)

Image reproduced from the GEBCO world map, <http://www.gebco.net/>
Customized by NOAA's Office of National Marine Sanctuaries



NATIONAL MARINE
SANCTUARIES

CELEBRATING 50 YEARS

SanctSound



2014 forward
2018-2022

<https://sanctsound.ioos.us/>

Olympic Coast

West Coast
Region

Monterey Bay

Channel Islands

Papahānaumokuākea

Pacific Island Region

Hawaiian Islands Humpback Whale

Stellwagen Bank

Eastern Region

Gray's Reef

Florida Keys



2014 forward
2018-2022
2022 forward



Olympic Coast

West Coast
Region

Monterey Bay

Channel Islands

Chumash
Heritage

Stellwagen Bank

Eastern Region

Flower
Garden Banks

Gray's Reef

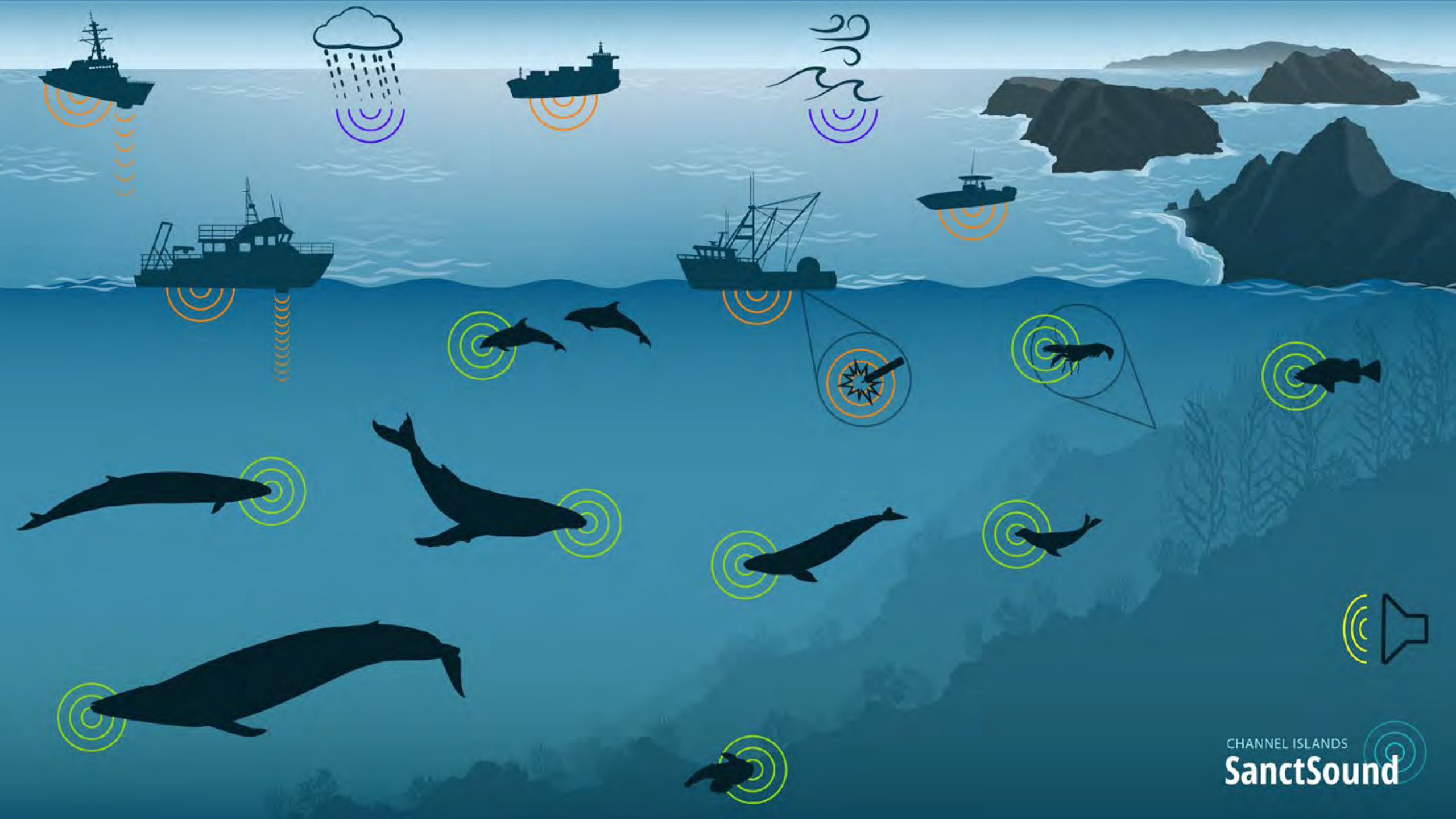
Florida Keys

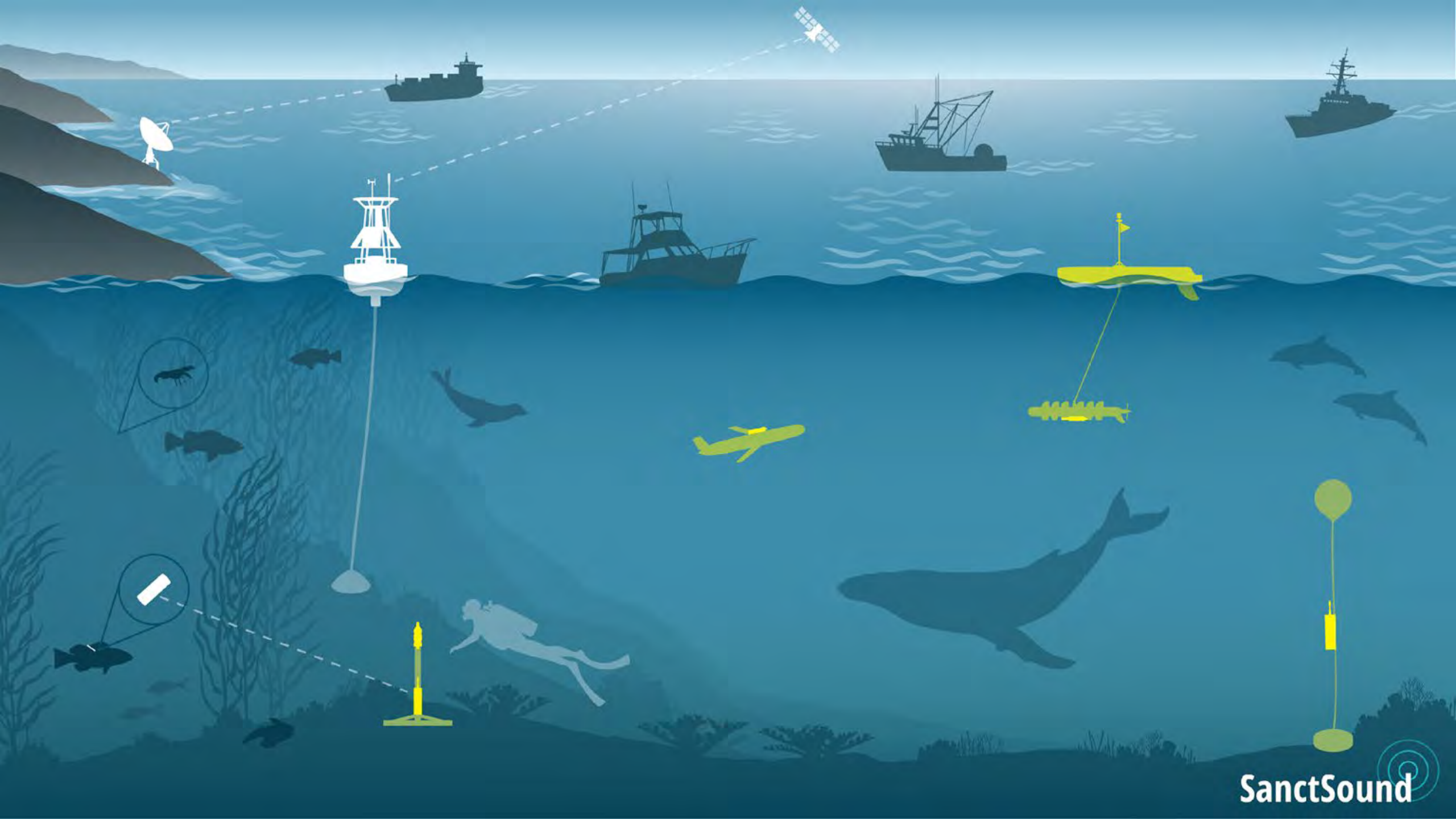
Papahānaumokuākea

Pacific Island Region

Hawaiian Islands Humpback Whale









Olympic Coast

West Coast
Region

Monterey Bay
Channel Islands

Chumash
Heritage



Stellwagen Bank

Eastern Region

Gray's Reef

Flower
Garden Banks

Florida Keys

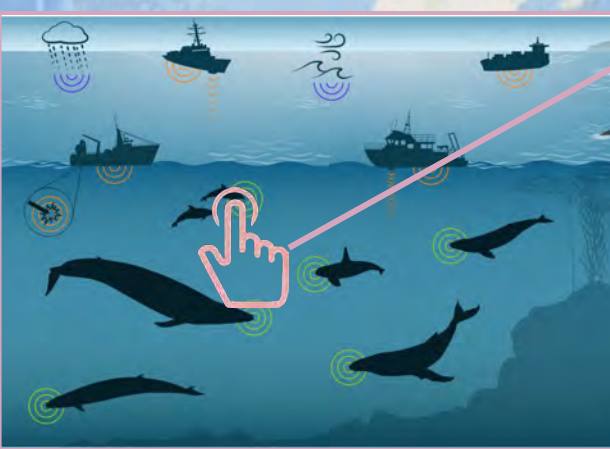


Papahānaumokuākea

Pacific Island Region

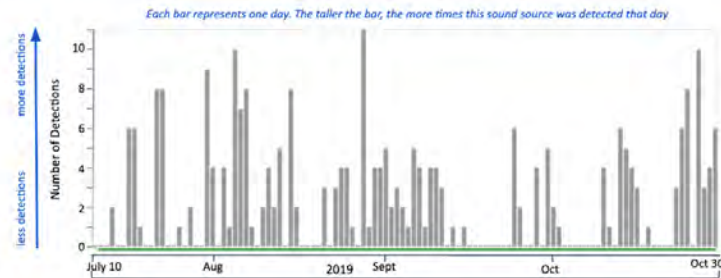
Hawaiian Islands Humpback Whale





Dolphins

Sights & Sounds Time series Monthly Patterns Hourly Patterns

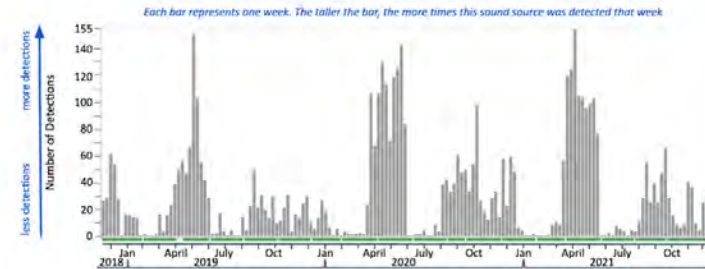


Of the four time periods of analyzed data at the shipping lanes listening station on the northern end of Olympic Coast sanctuary, only one recorded dolphins acoustically active: July through October 2019.



Dolphins

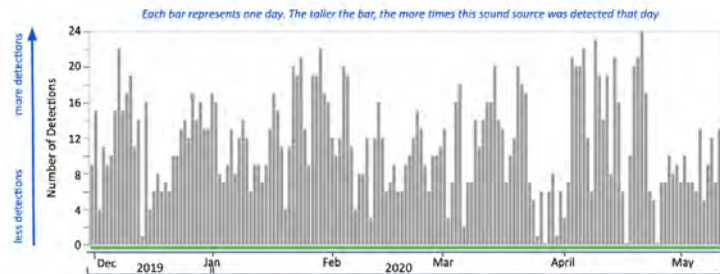
Sights & Sounds Time series Monthly Patterns Hourly Patterns



Dolphins were often detected off the northwest corner of Stellwagen Bank and across multiple seasons over the three year project.

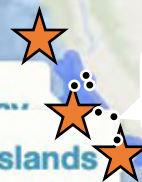
Dolphins

Sights & Sounds Time series Monthly Patterns



Dolphins were detected over the entire deployment at our listening station off the north shore of Kauai within Hawaiian Islands Humpback Whale sanctuary.

West Coast Region



Chumash Heritage

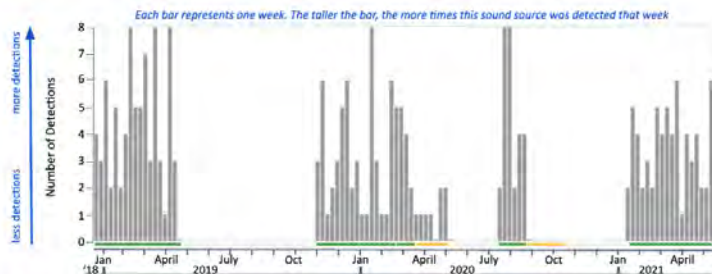
Channel Islands

Flower Garden Banks

Pacific Island Region

Dolphins

Sights & Sounds Time series Monthly Patterns Hourly Patterns



Dolphins were often detected south of Key West in Florida Keys sanctuary over the three year project.

Florida Keys

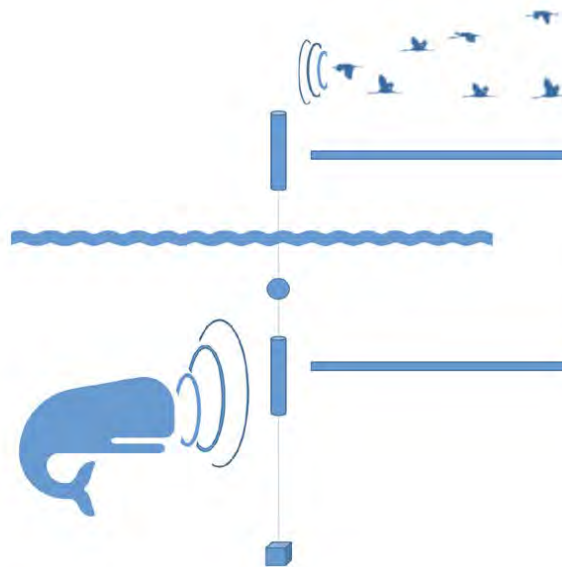


FLORIDA KEYS SanctSound

PAM Data Management And Cyberinfrastructure



Standardization, Centralization,
Service & Delivery



PassivePacker v.3.0.0

Package | Deployment Info | Location | People/Organizations | Additional Details | Ancillary Data

Select existing record to update or enter new deployment information
Select Existing Record

Project Site or Cruise ☐ Deployment ID Site ☐ Cruise ☐

Package destination (package directory will be created automatically)

Path to acoustic file:

Deployment Type Public Release Date

Select Deployment Type ☐ 03/22/22 ☐



ncei.noaa.gov/products/passive-acoustic-data

NCEI National Centers for Environmental Information
NATIONAL OCEANIC AND ATMOSPHERIC ADMINISTRATION

Passive Acoustic Data Viewer

NCEI Home > Maps and Geospatial Products > Passive Acoustic Data

Filter Passive Acoustic Data Collections

Start Deployment Date

End Deployment Date

Monitoring Programs

Data Types

Data Subtypes

Source Organizations

Funding Organizations

Instruments

Platform Types

Project Names

Sample Rate (kHz) Min Max

Sensor Depth (m) Min Max

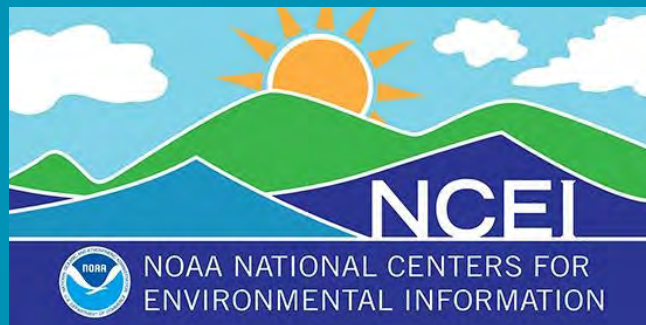
Position: 144.23703° 27.18405°

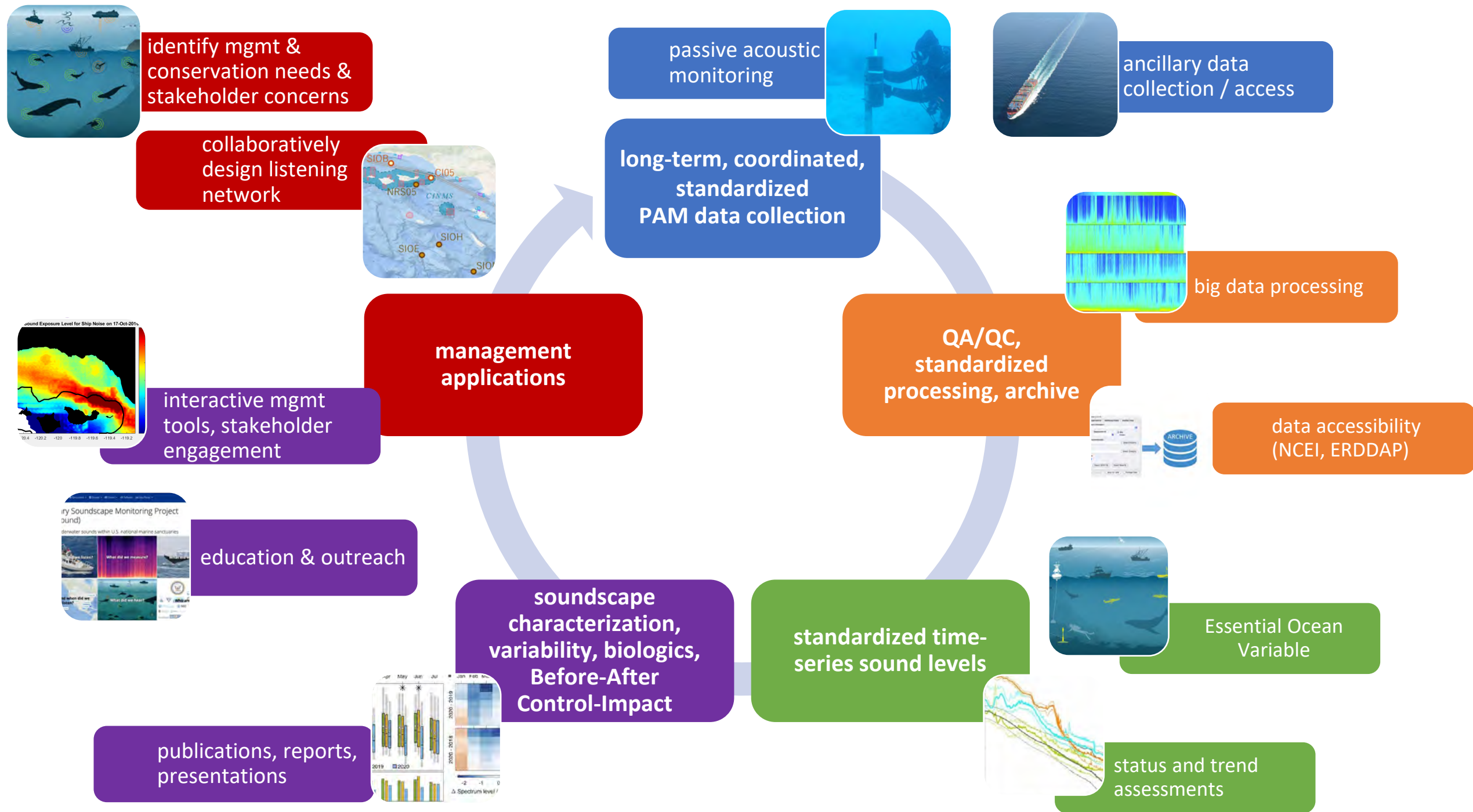
Passive Acoustic Data Collections

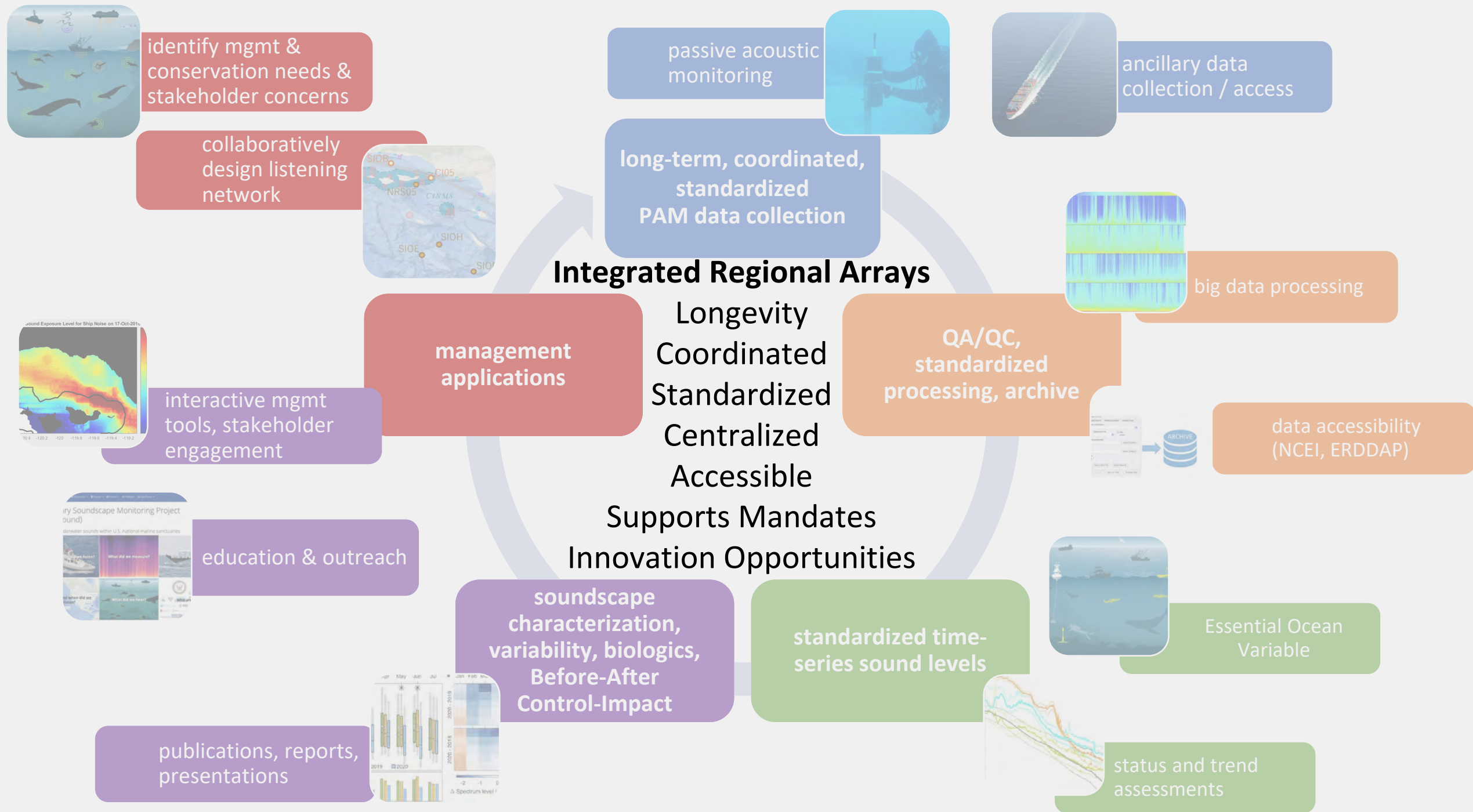
Request Data from NCEI
Access Data from Google

Raw Data
Audio
C-POD
Products
Sound Level Metrics 700
Detections 1038
Sound Propagation Models 33
Sound Clips 66

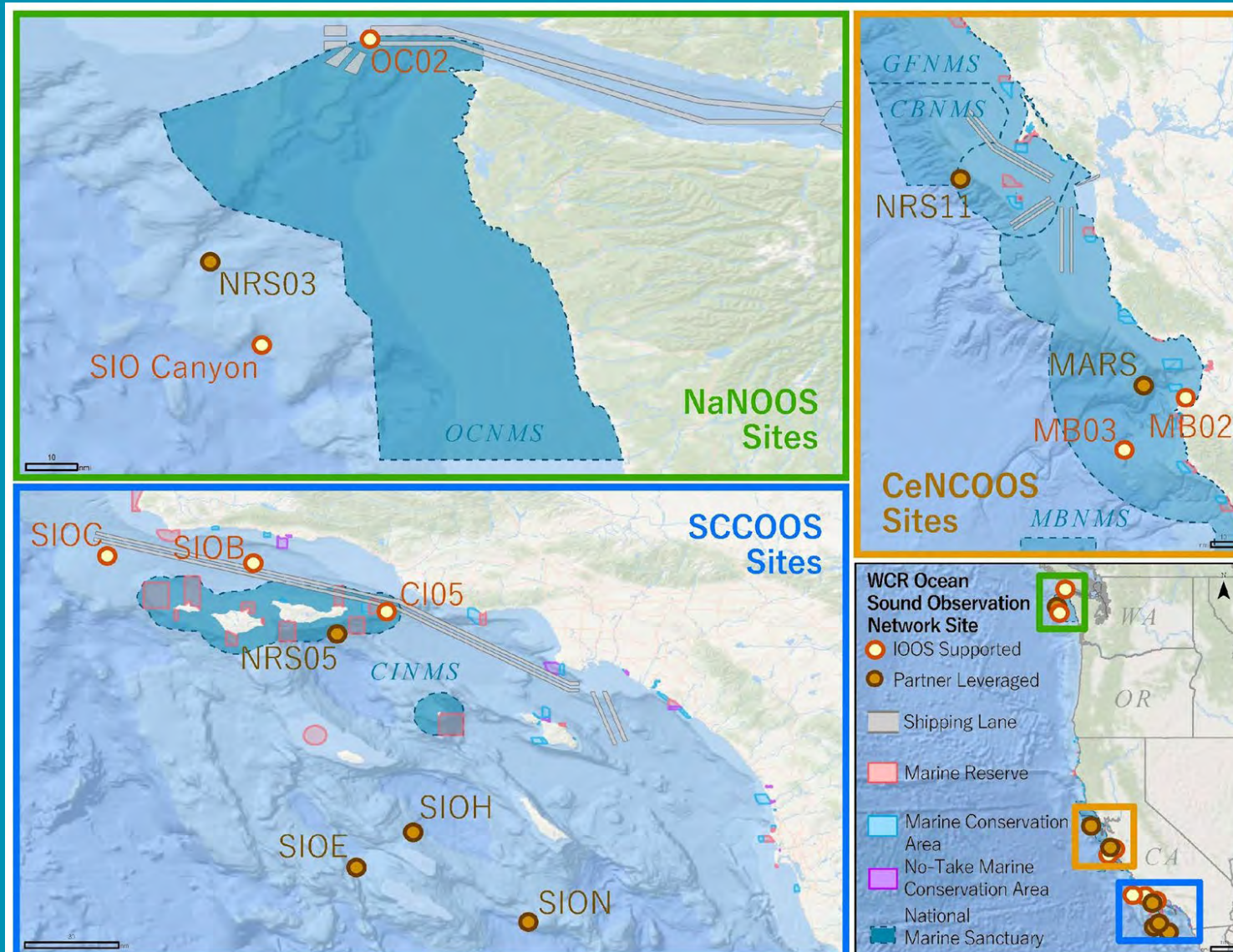
General Bathymetric Chart of the Oceans (GEBCO) | NOAA National Centers for Environmental Information (NCEI) | NOAA National Centers for Environmental Information | Powered by Esri







Ocean Sound Observation Network

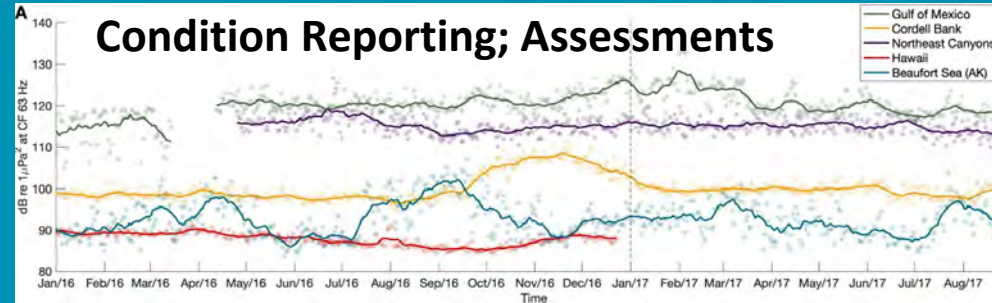
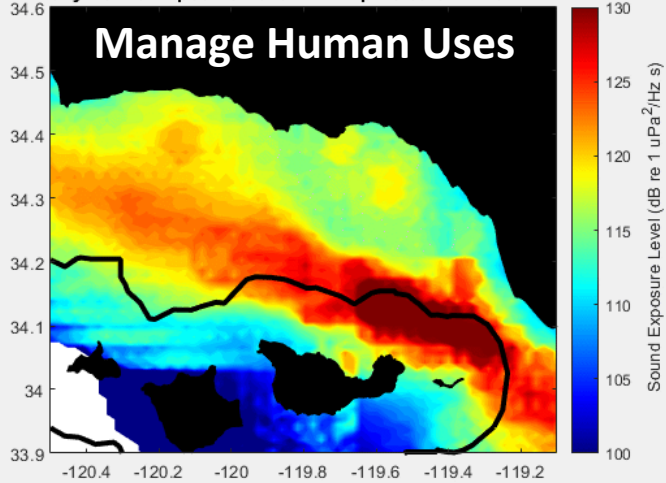


PAM Supporting Management



Daily Sound Exposure Level for Ship Noise on 17-Oct-2016

Manage Human Uses



(Haver et al. 2021)

Consultations & EIAs



©Marine Mammal Center

Guidelines for Safely Deterring Marine Mammals

A Proposed Rule by the National Oceanic and Atmospheric Administration on 08/31/2020

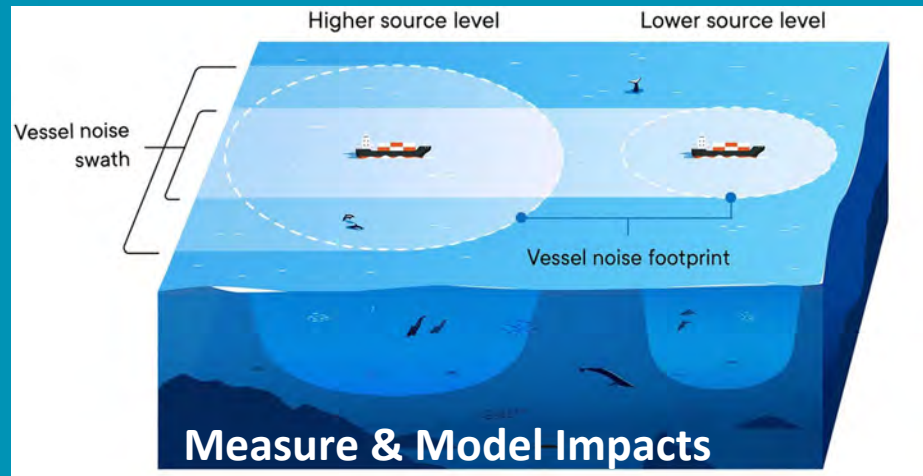
Inform Policy Actions

PUBLISHED DOCUMENT		DOCUMENT DETAILS	
<div> <div>AGENCY:</div> <div>National Marine Fisheries Service (NMFS), National Oceanic and Atmospheric Administration (NOAA), Commerce.</div> </div> <div> <div>ACTION:</div> <div>Proposed rule.</div> </div> <div> <div>SUMMARY:</div> <div>The Marine Mammal Protection Act (MMPA) allows for specified persons to employ measures to deter marine mammals from damaging fishing gear and</div> </div>	<div> <div>Printed version:</div> <div>PDF</div> </div> <div> <div>Publication Date:</div> <div>08/31/2020</div> </div> <div> <div>Agencies:</div> <div>National Oceanic and Atmospheric Administration</div> </div> <div> <div>Dates:</div> <div>Comments must be received by October 30, 2020.</div> </div> <div> <div>Comments Close:</div> <div>10/30/2020</div> </div>		

Climate Change; Biodiversity



(Palumbi et al. 2019)



Measure & Model Impacts

(Findley et al. 2023)



Vessel Noise Indicators



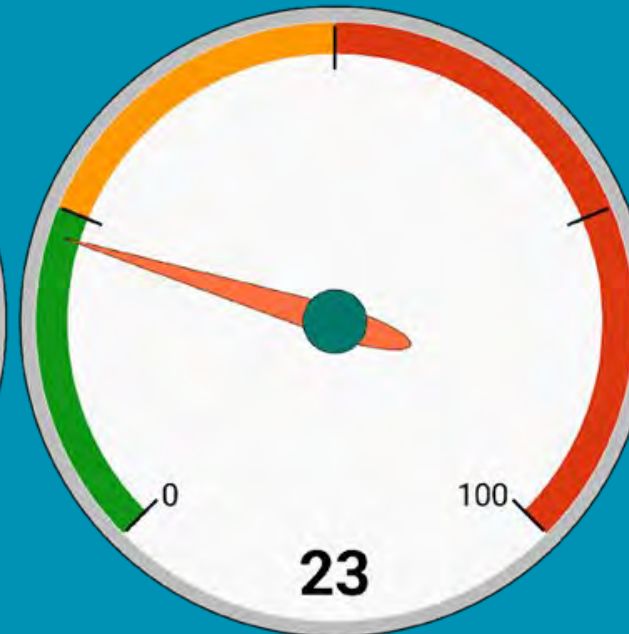
% of hours in a month with vessel noise **dominating** the soundscape



Stellwagen Bank
site 03 (Mar)



Florida Keys
site 03 (Mar)



Monterey Bay
site 02 (Mar)

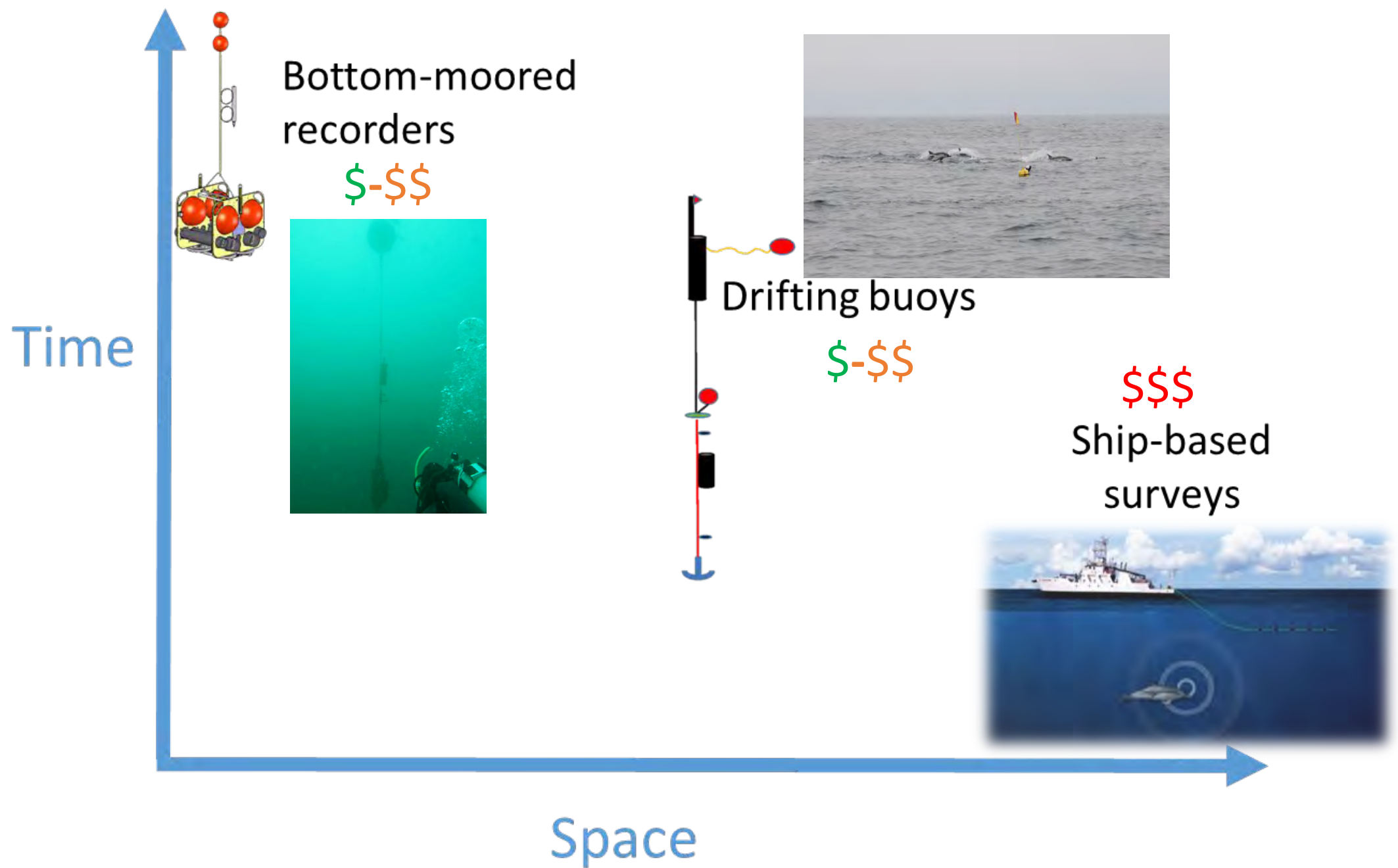


Papahānaumokuākea
(Jan)

The background features a stylized map of a coastline in shades of blue and grey. Four yellow circles are placed along the coast. In the lower-left, two small black silhouettes of dolphins are shown. In the lower-right, a larger black silhouette of a whale is depicted.

• THANK YOU!

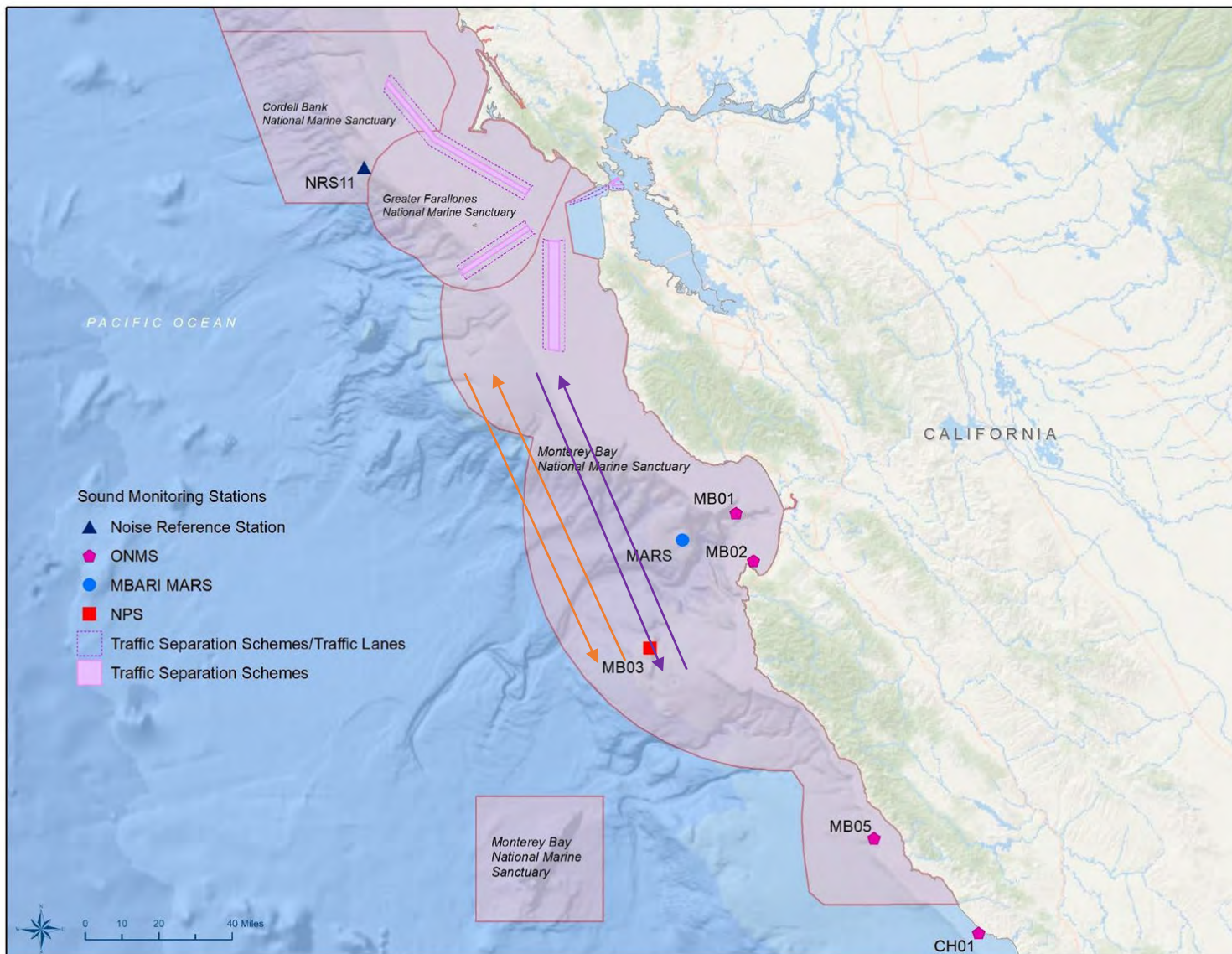
Lindsey Peavey Reeves
National Marine Sanctuary Foundation
providing assistance to:
NOAA Office of National Marine Sanctuaries
<https://sanctsound.ioos.us>
Lindsey.Peavey@noaa.gov



(adapted from a slide by Shannon Rankin, NOAA SWFSC)



~60-year time-series at Sur Ridge



**MONTEREY BAY
NATIONAL MARINE
SANCTUARY**



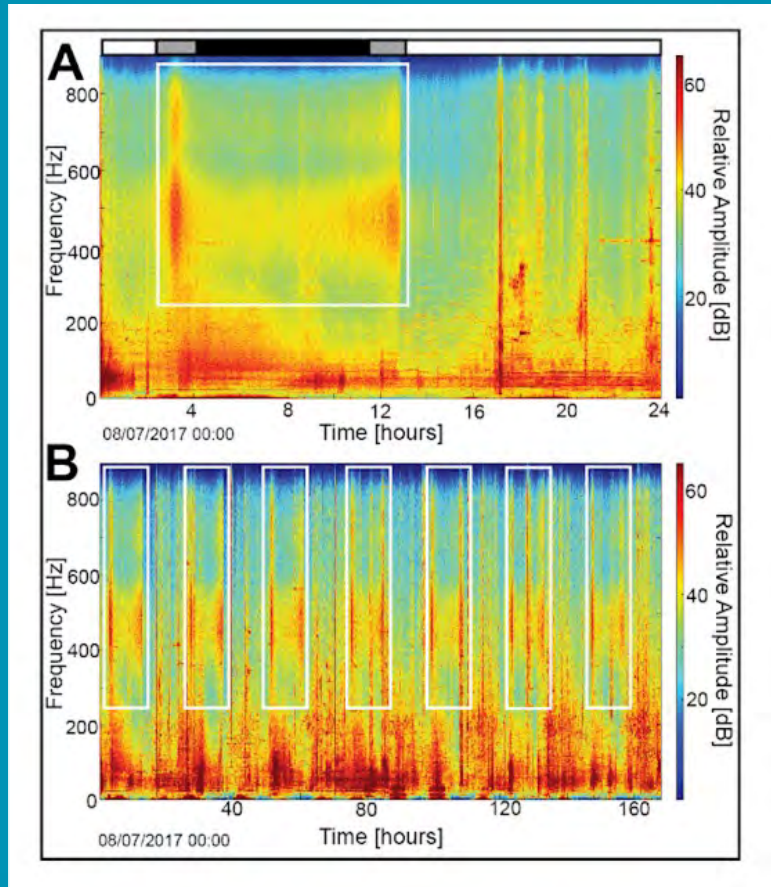
**CENTRAL & NORTHERN
CALIFORNIA OCEAN
OBSERVING SYSTEM**



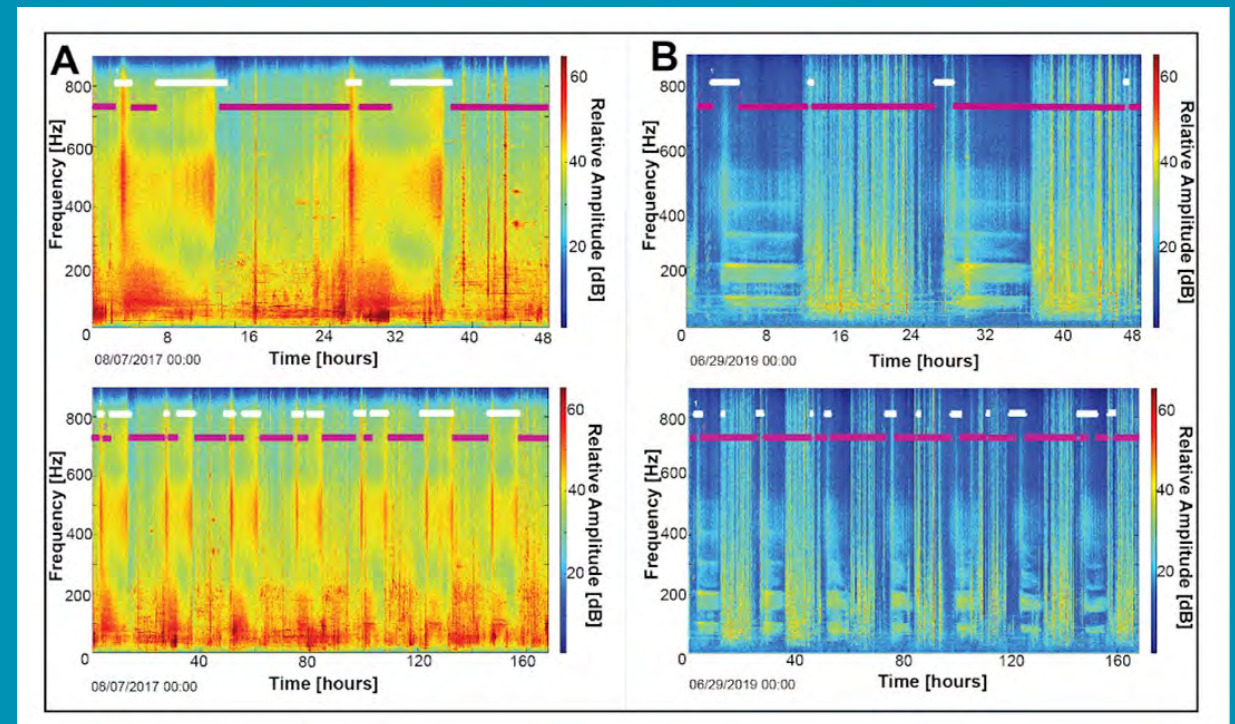
Unsupervised detection of chorusing



Manual logs of fish chorus (A-day; B-week)



Automated neural network classification of
chorus & noise from soundscape data



Integrated method using: Randomized Robust Principal
Component Analysis (RRPCA), unsupervised clustering,
and a neural network

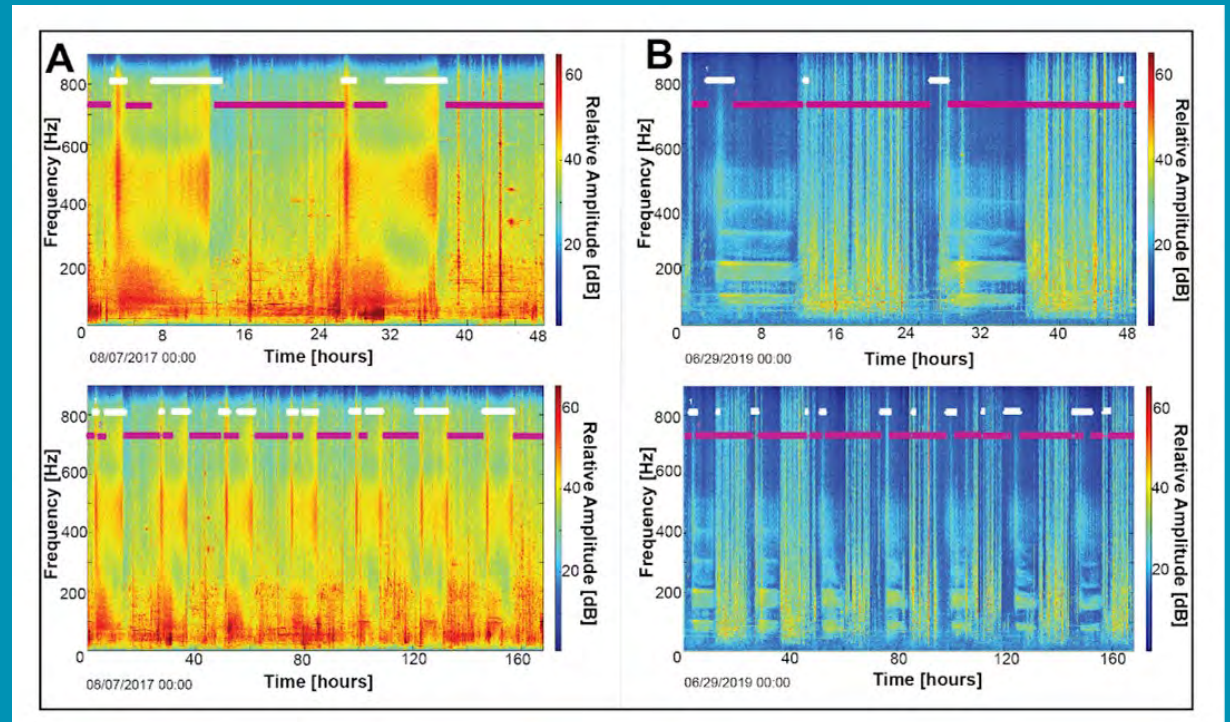
Climate Change



Automated neural network classification of
chorus & noise from soundscape data



(Palumbi et al. 2019)



Integrated method using: Randomized Robust Principal
Component Analysis (RRPCA), unsupervised clustering,
and a neural network

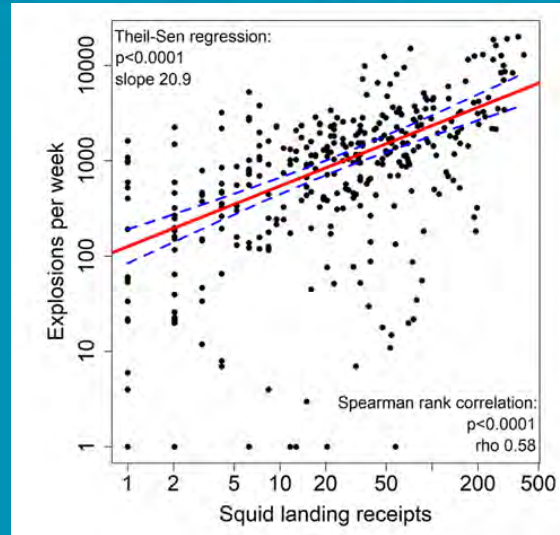


Seal Bomb Explosions

SanctSound



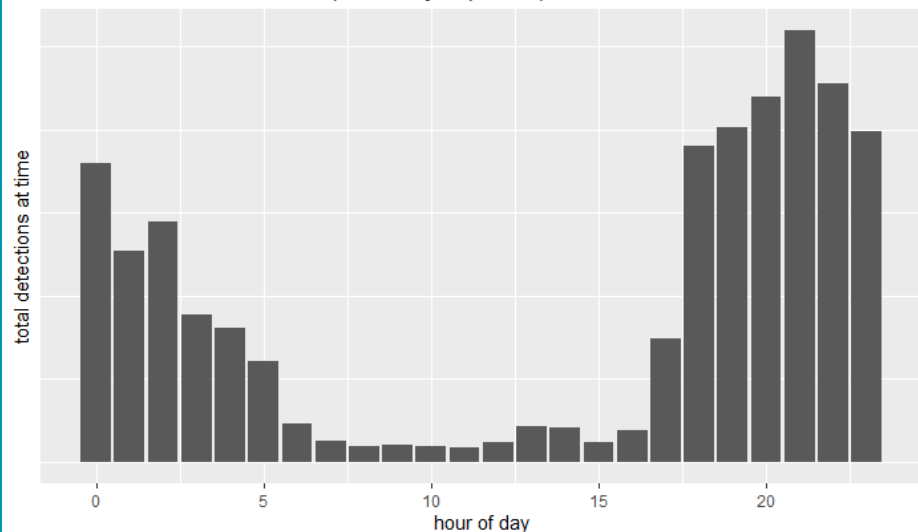
Explosions
correlated with
squid fishing



Most explosions
at night



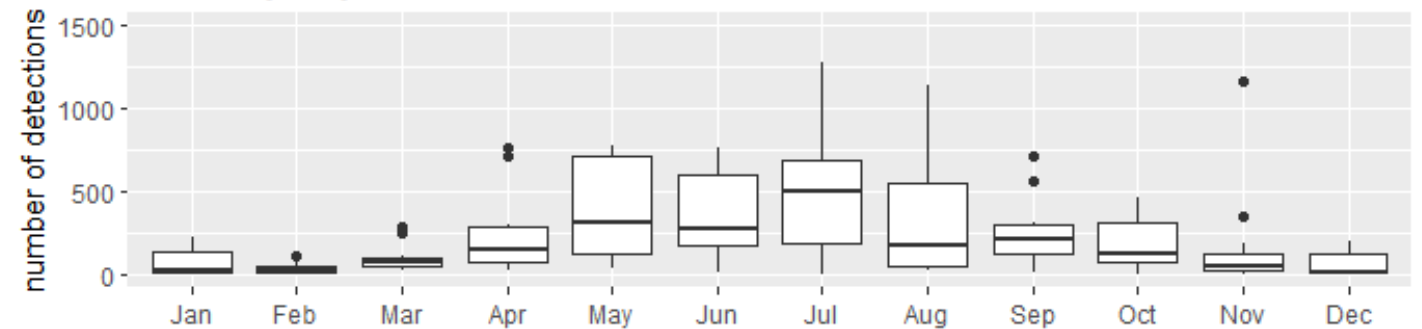
Time of Seal Bomb Detection (CINMS hydrophones)



Monthly patterns

Monterey Bay Seal Bomb Detections

2015-2020



Channel Islands Seal Bomb Detections

