

Demo of the IOOS Environmental Data Server

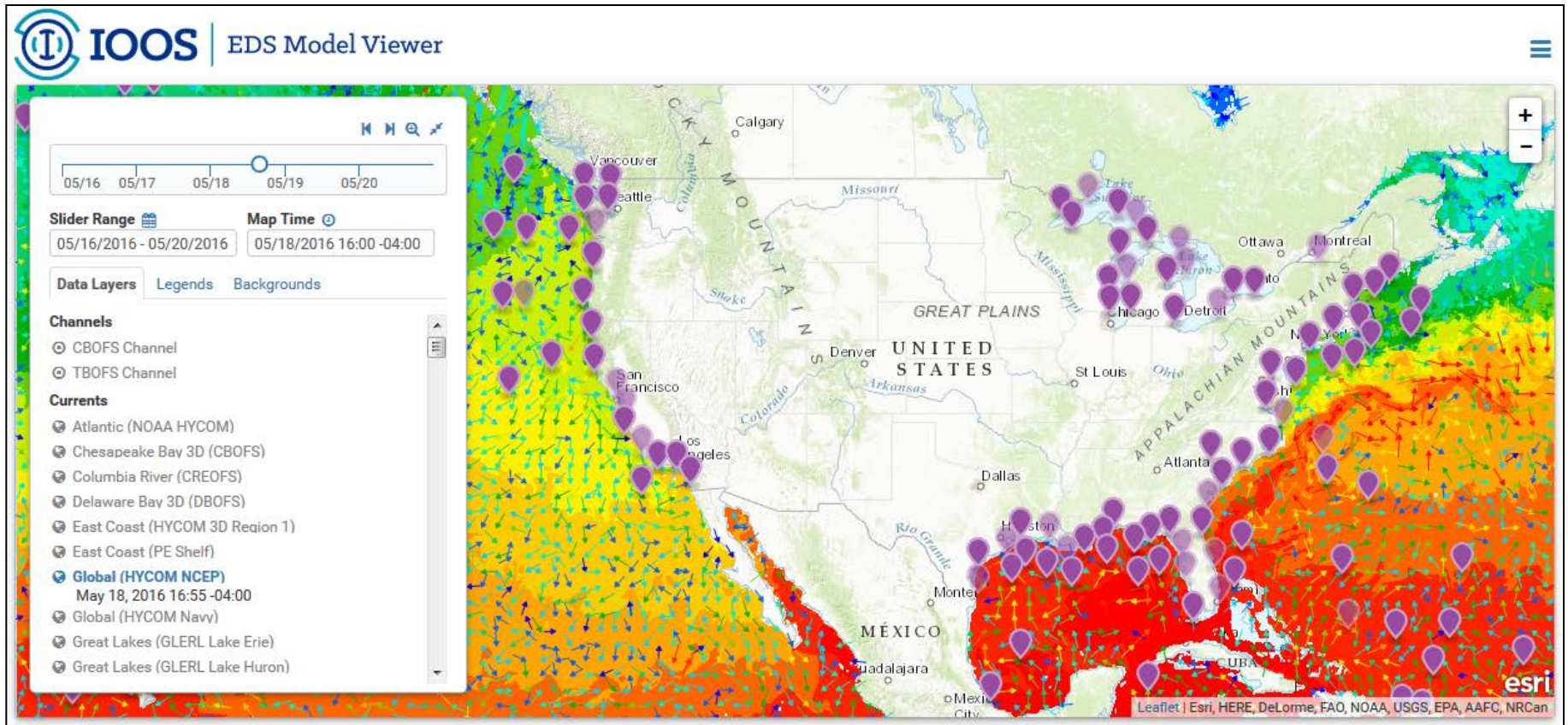


IOOS EDS Model Viewer

Kathleen Bailey (IOOS), Kelly Knee (ASA)

Why EDS?

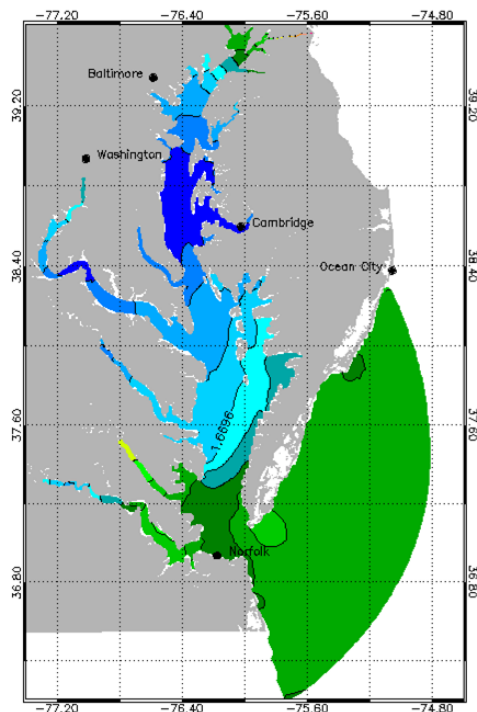
- Requirement for integrated model information
- IOOS invested in a capability; provides platform for collaboration opportunities, relationships
- Provides RAs a solution for hosting model output
- Demonstrates RA modeling capabilities



- Developed by RPS Applied Science Associates (ASA).
- Provides global/national/regional met/ocean data and forecasts operationally to the Coast Guard in SAROPS.
- Servers compliant to DHS and DoD guidelines
- 24/7 operations, average yearly uptime > 99%.
- QC: Staff support, monitoring system, daily reports
- IOOS project: ASA funded to enhance EDS with additional models, parameters to meet NOS and user needs, and provide public access to this information.

IOOS/CO-OPS Collaboration

- CO-OPS Requirements
 - High interest in visualization
 - Rest of OFS parameters (surface plus depth),
 - Animations
 - Navigation channels (CBOFS, TBOFS) showing forecast conditions
 - Basic statistics from time-series plots,
 - Ability to compare to CBIBS, other observed data



CBOFS nowcast (IDL plot)

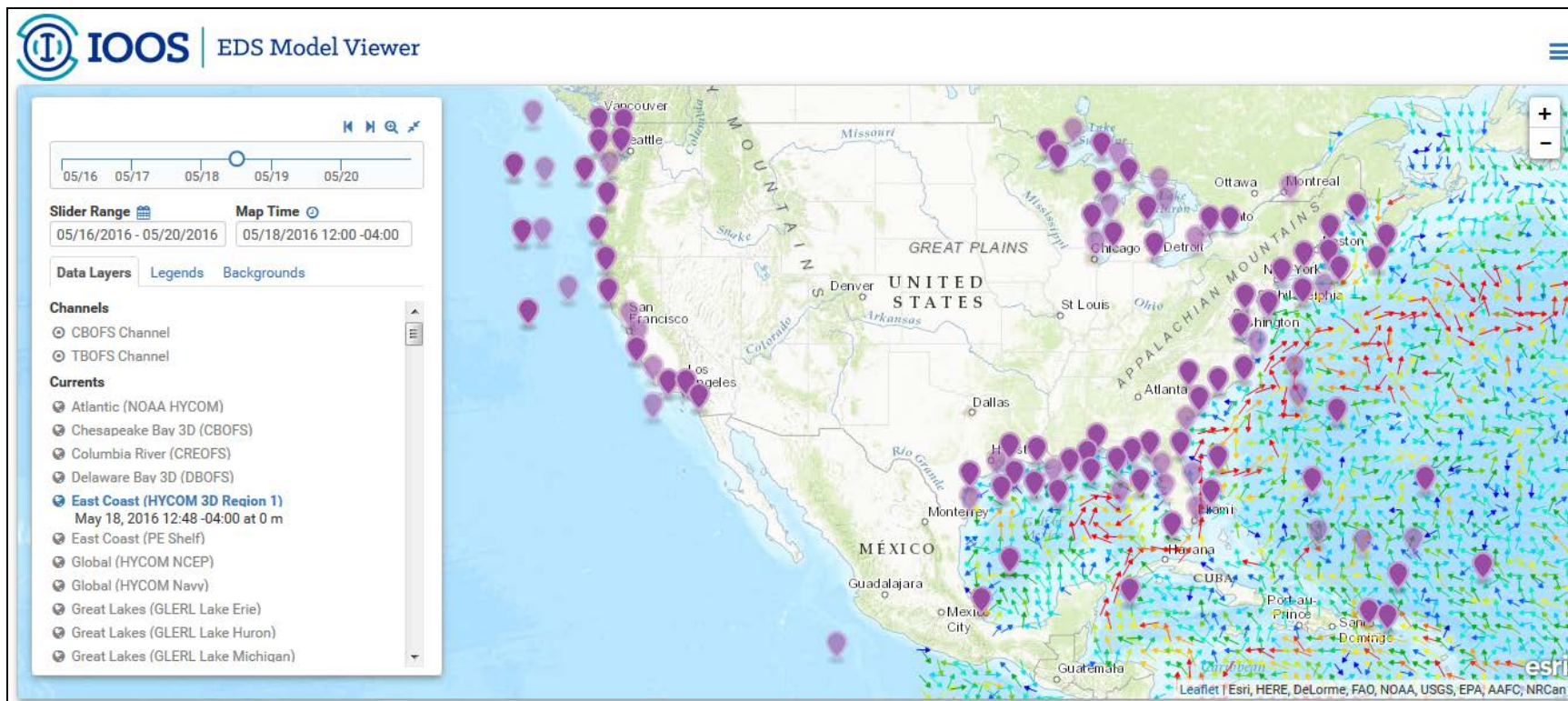
- Image of model output



CBOFS nowcast (EDS Viewer)

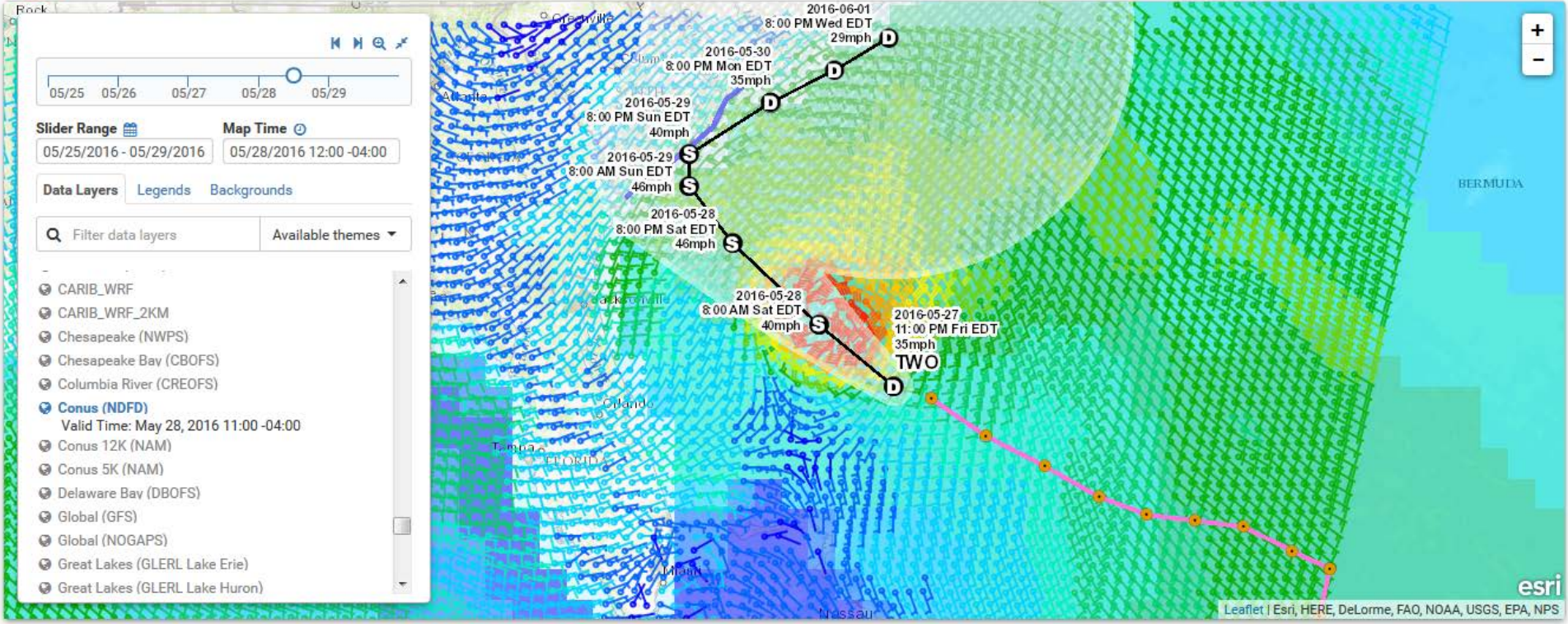
- Image + comparisons + analysis

eds.ioos.us



- May 1, 2016: Visualization (IOOS EDS Model Viewer) -- enables users to view and analyze model output and supplemental observations.
- Access to EDS data (THREDDs)
- Model data: Currents, water temperature, salinity, water level, winds, waves
- Observed data: NDBC, CO-OPS, CBIBS, NERRS, HF Radar
- ENC's, active tropical cyclone tracks

Bonnie (5/28/16 12:00 UTC)



Conus NDFD winds + WW3 wave heights + Active tropical storm

CBIBS/ CBOFS Salinity

