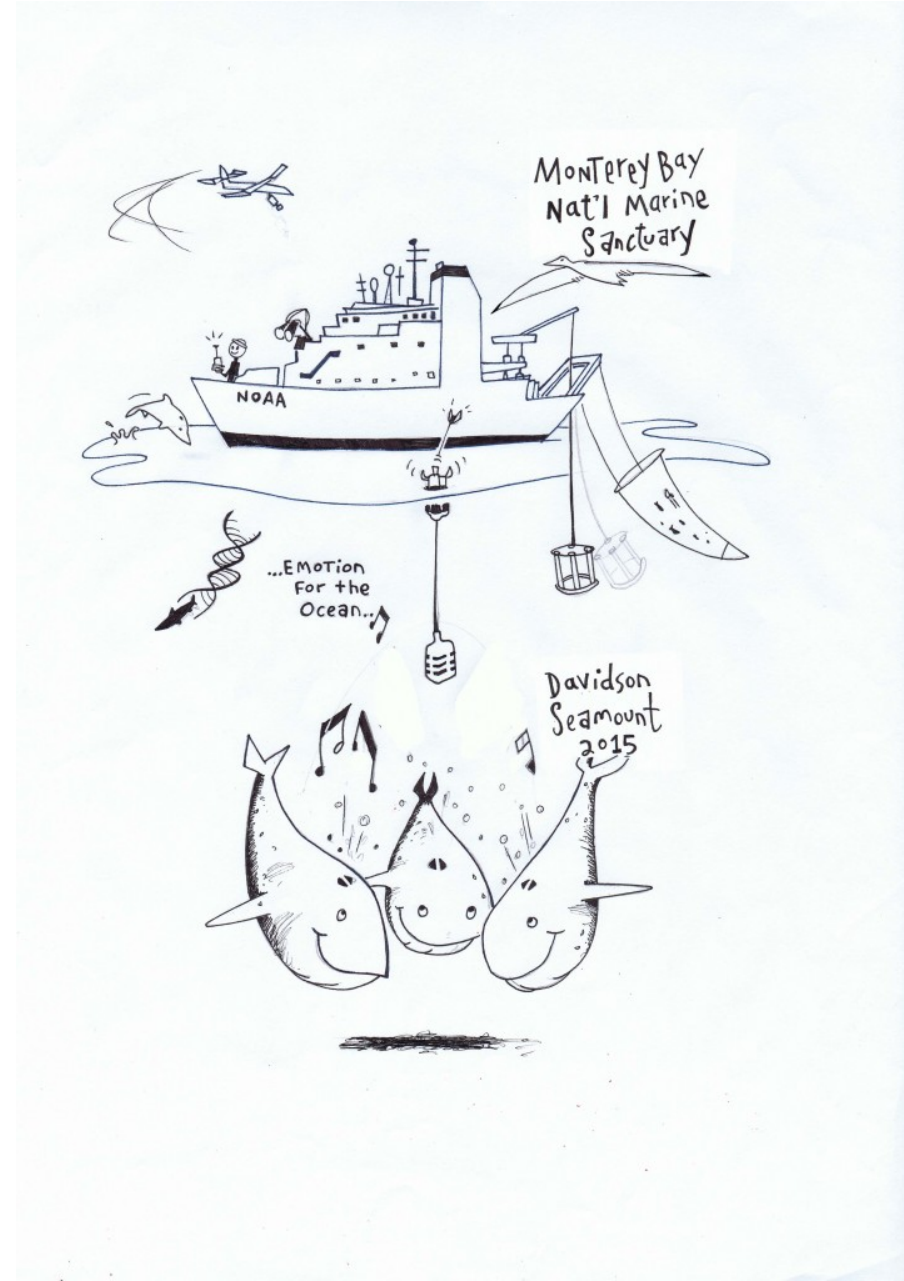
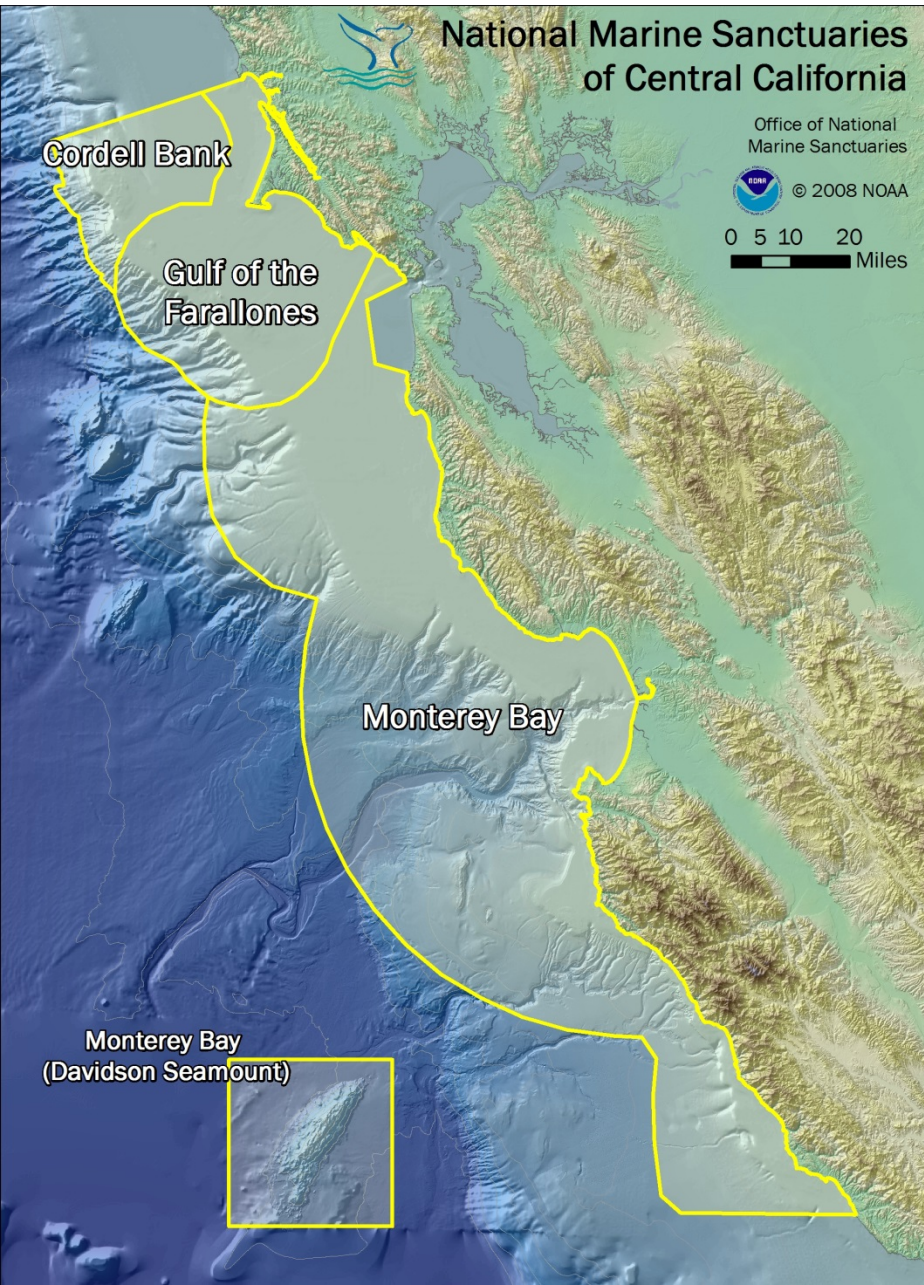


Monterey Bay National Marine Sanctuary

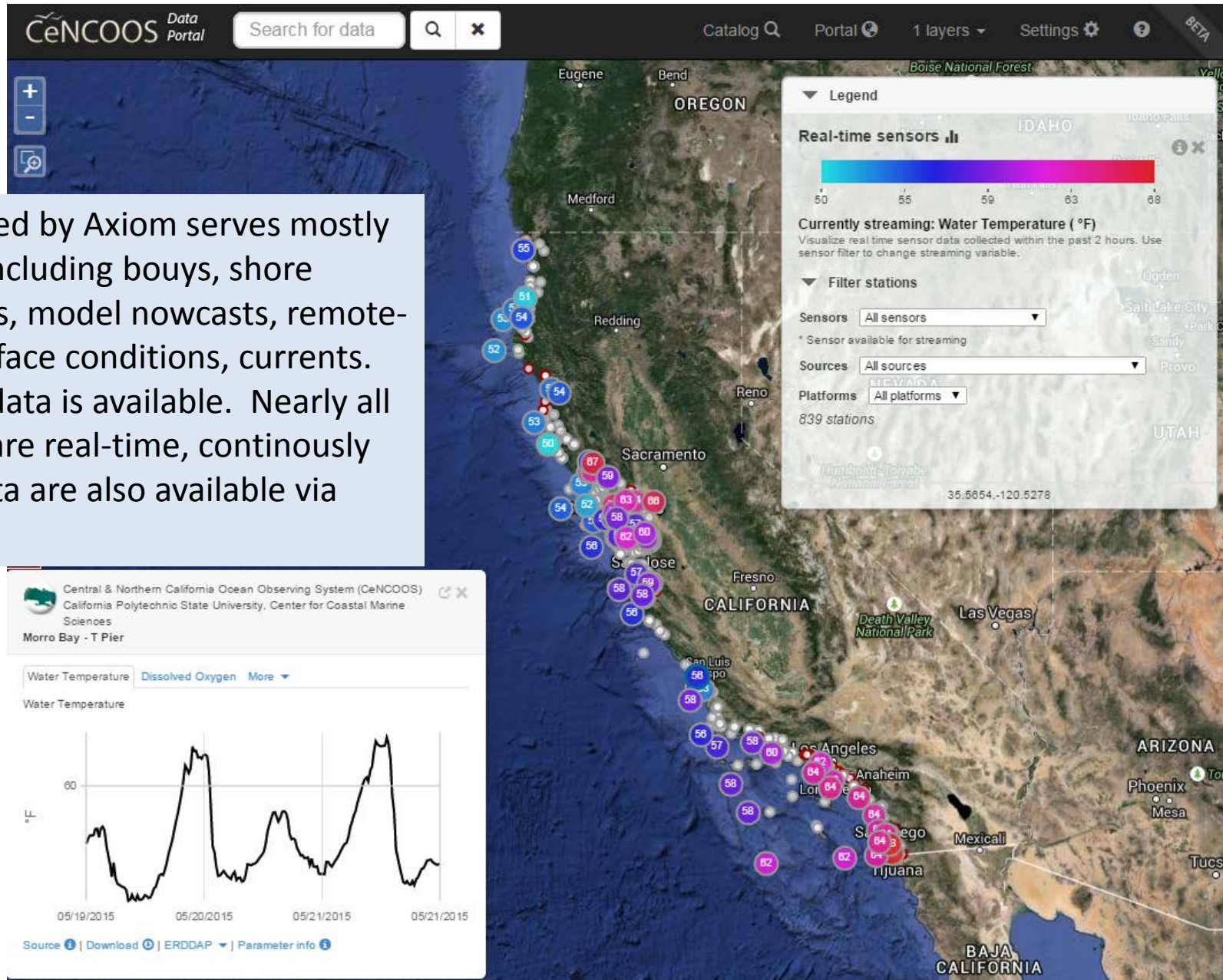


MBON: Data to add from CeNCOOS region

<u>Title</u>	<u>Region</u>	<u>Variables</u>	<u>Start Year</u>	<u>Formats</u>
Bathymetry, multibeam, USGS	mb	phys	na	
buoys, NDBC and other	both	all		
CA Landings, by port,(1928 - 2002)	mb	bio	1928	netCDF
CalCOFI line 67 Quarterly cruises	mb	all		netCDF
climatology, regional scale	both	phys		netCDF
Currents from radar	mb	phys	1995	netCDF
Environmental DNA	both	bio	2015	tbd
Environmental DNA, from archived filters	mb	bio	1995	tbd
Environmental Sample Processor	mb	bio		netCDF
Farallon Island Seabird Diet, Phenology, Productivity	mb	bio		netCDF
glider	both	all		
GLOBEC NEP Plankton Data	mb	bio		netCDF
Groundfish Watch, 1997-2009	mb	bio	1997	netCDF
Harmful algal bloom time series	mb	bio		
MBARI semi monthly cruises	mb	all	1989	
Phytoplankton samples, frozen	mb	bio	2007	tbd
PISCO surveys	mb	bio		
River flow, USGS	both	phys		
satellite- altimetry	both	phys		netCDF
satellite- near coastal winds	both	phys		netCDF
satellite- salinity	both	phys		netCDF
satellite- sst	both	phys		netCDF
satellite-chl	both	bio		netCDF
shore stations	both	all		
SWFSC Midwater trawl surveys, may-june	mb	bio	1983	
SWFSC surveys	mb	bio		
Time series related to sardine fishery	mb	all	1930	

Goal is to integrate, compare, analyze biological AND physical data

Portal developed by Axiom serves mostly physical data including bouys, shore stations, gliders, model nowcasts, remote-sensed sea surface conditions, currents. Some biology data is available. Nearly all sites/ sensors are real-time, continuously streaming. Data are also available via web services



Extra slide- test portal (Axiom) presented at April 24 all-MBON mtng

Egg counts aggregated into hexagonal bins, and GHR SST

